

SERVO-CONTROLLED 3-WAY VACUUM SOLENOID VALVES WITH BISTABLE IMPULSE SOLENOID PILOT VALVE AND WITH LOW ABSORPTION ELECTRIC COIL

These solenoid valves have the same functions and structure as the previously described ones.

Their distinctive feature is a bistable impulse solenoid valve activated by a built-in low absorption electric coil which, at a simple electric impulse, exchanges the shutter position even in absence of electricity, until it receives a new impulse of opposite polarity. For this reason, they can only be supplied with DC electric coils.

They are particularly recommended in all those cases that require a safe connection to the vacuum source, even in absence of electricity.

The electric coil of the solenoid pilot valve is fully plasticised with synthetic resin, tight execution, insulation class F (up to 155 °C) compliant with VDE standards, with 3 mm 2-terminal electrical connections in compliance with EN 175301-803 (ex DIN 43650)-C. Protection degree IP 54; IP 65 for inserted connector.

Available for voltages of 12-24V/CC.

Allowed tolerance on the voltage nominal value: ±10%.

Maximum electric power: 1 W

The connector can be rotated by 180° on the coil and can be supplied, upon request, with Led lights, anti-interference circuit and/or with protection devices against overvoltage and polarity reversal.

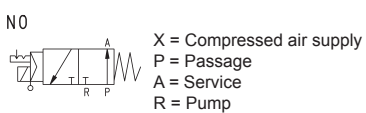
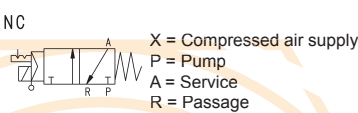
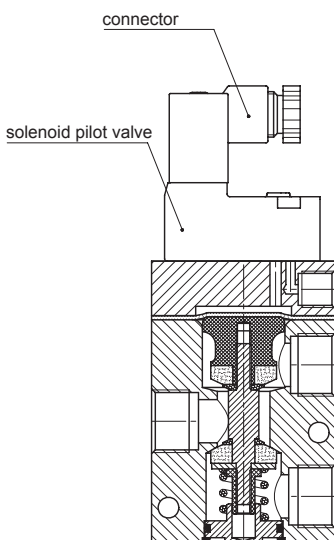
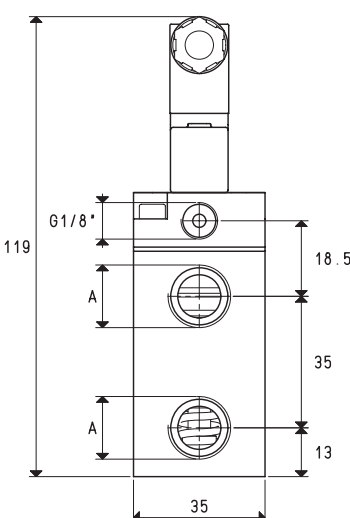
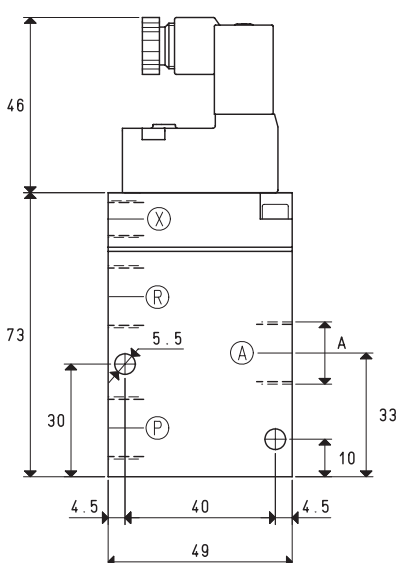
The push-button device for their manual activation cannot be installed on these solenoid valves.

Technical features

Working pressure: from 0.5 to 3000 mbar abs.

Servo-control pressure: see table

Temperature of the sucked fluid: from -5 to +60 °C



Art.	A	Max. capacity	Vacuum level		Reaction time		Ø	Passage section	Servo-control pressure	Weight
			min	max	exc.	deexc.				
07 01 53	G1/4"	6	1000	0.5	16	27	8.5	56.8	4 ÷ 7	0.44
07 02 53	G3/8"	10	1000	0.5	16	27	11.5	103.8	4 ÷ 7	0.43

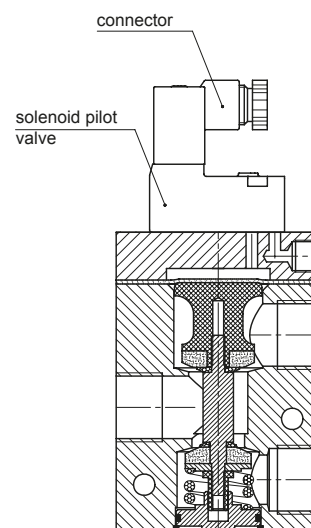
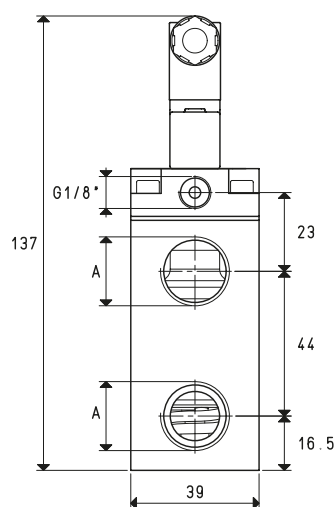
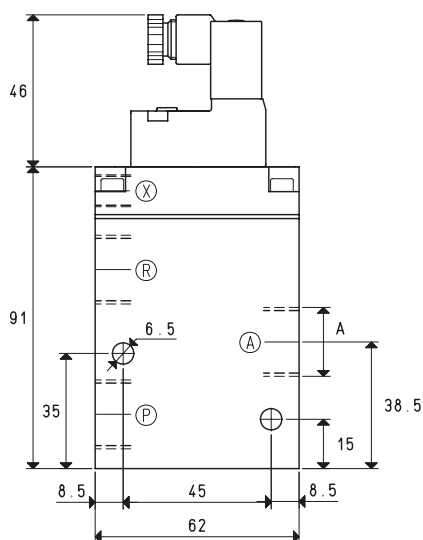
Note: Please specify the electric coil voltage in the order (E.g.: 07 01 53 V24-CC)

The connector is not integral part of the solenoid valve and, therefore, must be ordered separately (See solenoid valve accessories).

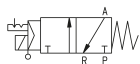
SERVO-CONTROLLED 3-WAY VACUUM SOLENOID VALVES WITH BISTABLE IMPULSE SOLENOID PILOT VALVE AND WITH LOW ABSORPTION ELECTRIC COIL



4

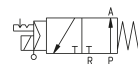


NC



X = Compressed air supply
P = Pump
A = Service
R = Passage

NO



X = Compressed air supply
P = Passage
A = Service
R = Pump

Art.	A	Max. capacity	Vacuum level		Reaction time		Ø	Passage	Servo-control	Weight
	Ø	cum/h	min	max	exc.	deexc.	orifice	section	pressure	Kg
07 03 53	G1/2"	20	1000	0.5	16	40	15.0	176	6 ÷ 8	0.52

* Add the letters LP to the article for servo-control pressure 4 ÷ 6 bar (g).

Note: Please specify the electric coil voltage in the order (E.g.: 07 03 53 V24-CC)

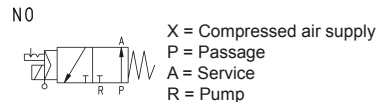
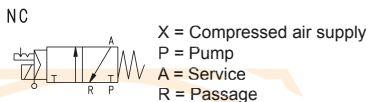
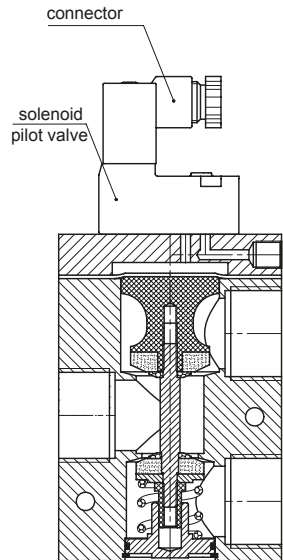
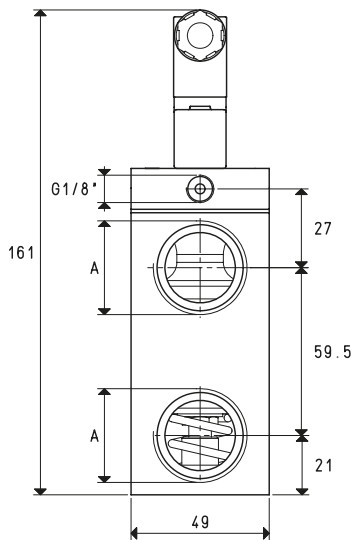
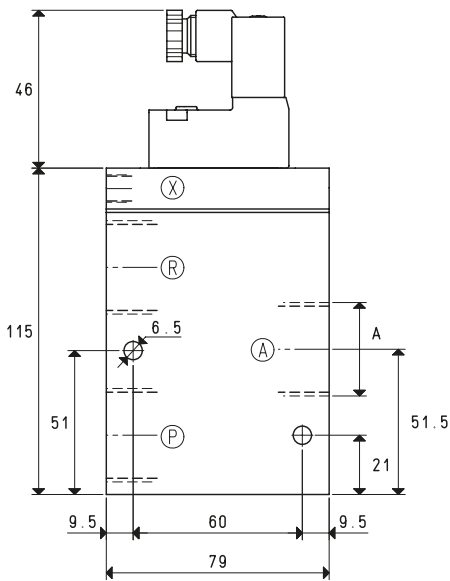
The connector is not integral part of the solenoid valve and, therefore, must be ordered separately (See solenoid valve accessories).

Conversion ratio: inch = $\frac{\text{mm}}{25.4}$; pounds = $\frac{\text{g}}{453.6}$ = $\frac{\text{Kg}}{0.4536}$

GAS-NPT thread adapters available at page 1.117

4.41

SERVO-CONTROLLED 3-WAY VACUUM SOLENOID VALVES WITH BISTABLE IMPULSE SOLENOID PILOT VALVE AND WITH LOW ABSORPTION ELECTRIC COIL



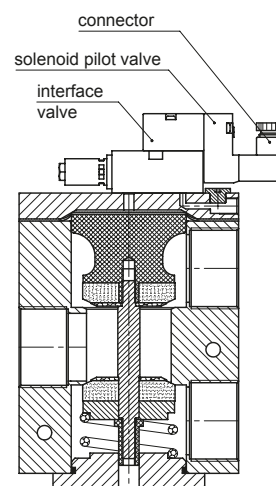
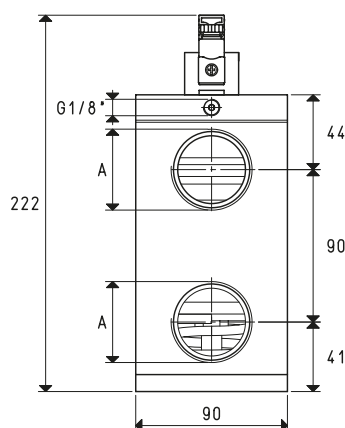
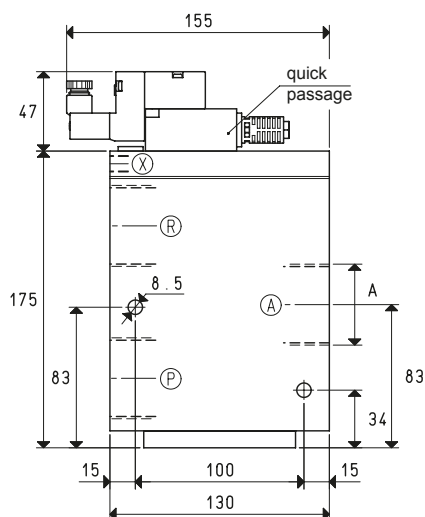
Art.	A Ø	Max. capacity cum/h	Vacuum level mbar abs.		Reaction time msec		Ø orifice	Passage section mm²	Servo-control pressure *bar (g)	Weight Kg
			min	max	exc.	deexc.				
07 04 53	G3/4"	40	1000	0.5	16	40	20	314	6 ÷ 8	1.00
07 05 53	G1"	90	1000	0.5	18	42	25	490	6 ÷ 8	0.94

* Add the letters LP to the article for servo-control pressure 4 ÷ 6 bar (g).

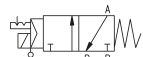
Note: Please specify the electric coil voltage in the order (E.g.: 07 04 53 V24-CC)

The connector is not integral part of the solenoid valve and, therefore, must be ordered separately (See solenoid valve accessories).

SERVO-CONTROLLED 3-WAY VACUUM SOLENOID VALVES WITH BISTABLE IMPULSE SOLENOID PILOT VALVE AND WITH LOW ABSORPTION ELECTRIC COIL

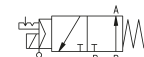


NC



X = Compressed air supply
P = Pump
A = Service
R = Passage

N0



X = Compressed air supply
P = Passage
A = Service
R = Pump

Art.	A	Max. capacity	Vacuum level		Reaction time		Ø	Passage section	Servo-control pressure	Weight
	Ø	cum/h	min	max	exc.	deexc.	orifice			
07 06 53	G1 1/2	180	1000	0.5	60	38	40	1256	6 ÷ 8	4.5

* Add the letters LP to the article for servo-control pressure 4 ÷ 6 bar (g).

Note: Please specify the electric coil voltage in the order (E.g.: 07 06 53 V24-CC)

The connector is not integral part of the solenoid valve and, therefore, must be ordered separately (See solenoid valve accessories).

Conversion ratio: inch = $\frac{\text{mm}}{25.4}$; pounds = $\frac{\text{g}}{453.6}$ = $\frac{\text{Kg}}{0.4536}$

GAS-NPT thread adapters available at page 1.117