

Electric coils

Electric coils are windings of copper wire on nylon coils fully plasticised in synthetic resin which activate the electromagnetic actuators with which the solenoid valves are provided. Crossed by an electric current, these coils generate a magnetic field which activates the mobile core inside the actuators; the mobile core features a built-in or fixed shutter which cause the valve commutation by opening and closing their orifices.

The standard electric coil is fully plasticised with synthetic resin, tight execution, insulation class F (up to 155 °C) compliant with VDE standards, with 6.3 mm 3-terminal electrical connections in compliance with EN 175301-803 (ex DIN 43650). Protection degree IP 54; IP 65 with inserted connector.

Allowed tolerance on the voltage nominal value: ±10%.

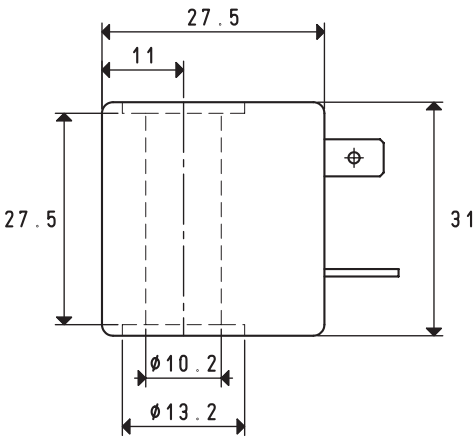
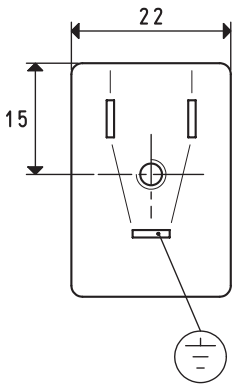
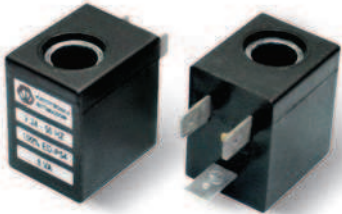
Allowed tolerance on the frequency value: ±5%

Room temperature: from -10 to +45 °C

Fluid temperature: from -10 to +95 °C

Electric absorption: 8 ÷ 16.5 V.A. with AC and 6.5 ÷ 16 W with DC.

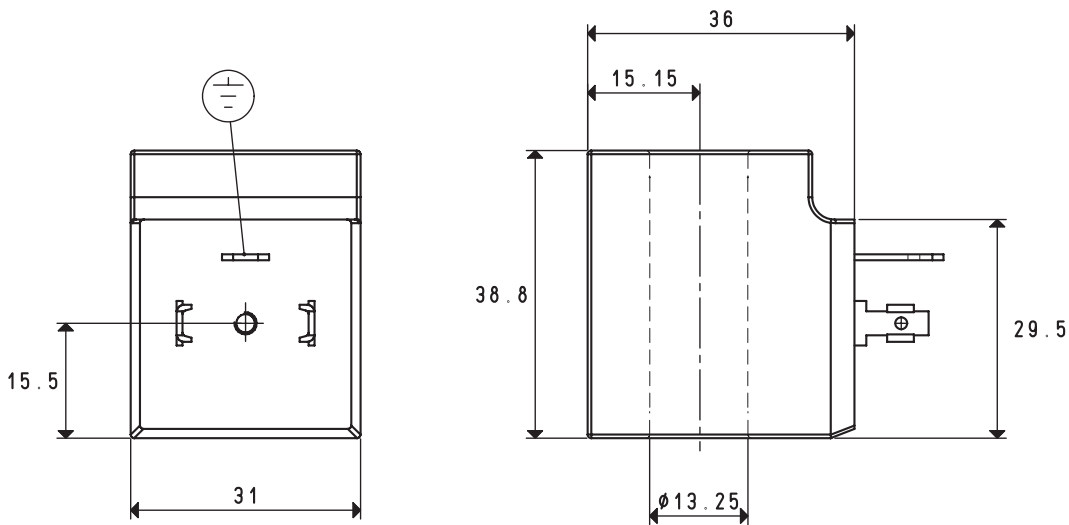
Electric coils can be rotated by 360°.



AC AND DC COILS

Art.	Duty cycle	Absorption	Nominal voltage	Weight g	Solenoid valves art.
00 07 172	100%	6.5 W	V24 CC	54	07 01 51 - 07 02 51
00 07 173	100%	8 V.A.	V24 / 50 - 60Hz	54	07 01 51 - 07 02 51

SOLENOID VALVE ACCESSORIES AND SPARE PARTS



AC AND DC COILS

Art.	Duty cycle	Absorption	Nominal voltage	Weight g
00 07 03 N	100%	16 W	V12 CC	100
00 07 04 N	100%	16 W	V24 CC	100
00 07 05 N	100%	16 W	V48 CC	100
00 07 06 N	100%	16 W	V110 CC	100
Solenoid valves art.				
07 01 11 - 07 02 11 - 07 03 11 - 07 04 11 - 07 05 11 - 07 06 11				
07 01 16 - 07 02 16 - 07 03 16				
07 01 20 - 07 02 20 - 07 03 20				
07 03 40 - 07 04 40 - 07 05 40 - 07 06 40				
07 03 51 - 07 04 51 - 07 05 51 - 07 06 51				
DDN 14				
00 07 256 N	100%	16.5 V.A.	V24/50 - 60 Hz	100
00 07 257 N	100%	16.5 V.A.	V48/50 - 60 Hz	100
00 07 258 N	100%	16.5 V.A.	V110/50 - 60 Hz	100
00 07 259 N	100%	16.5 V.A.	V220/50 - 60 Hz	100
Solenoid valves art.				
07 01 11 - 07 02 11 - 07 03 11 - 07 04 11 - 07 05 11 - 07 06 11				
07 01 16 - 07 02 16 - 07 03 16				
07 01 20 - 07 02 20 - 07 03 20				
07 03 40 - 07 04 40 - 07 05 40 - 07 06 40				
07 03 51 - 07 04 51 - 07 05 51 - 07 06 51				
DDN 14 - DDN 25				

3D drawings available at [www.vuototecnica.net](http://www.vuototecnica.net)

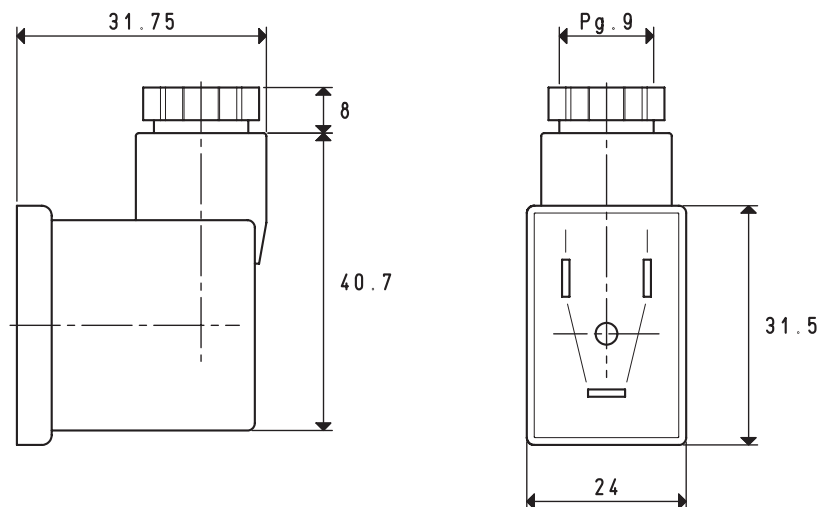
## SOLENOID VALVE ACCESSORIES AND SPARE PARTS



Connectors are fundamental for bringing electric current to the solenoid valve coils. They are available in the simple plug version installed as standard and, upon request, with LEDs to signal the presence of voltage, with anti-interference circuits, protection devices against overvoltage and polarity reversal. When correctly installed, all connectors provide full protection against water jets, according to EN 60529 standards (protection class IP 65). Moreover, they meet VDE 0110-1 /89 standards, working voltage up to 250 V, overvoltage category II, Degree of use 3, regarding insulation class.

In all contacts, a snap joint between contact holders and the external protection guarantees a safe locking and easy assembly. A safe locking is essential for guaranteeing the operator full protection when handling the connector.

The contact holder can be easily extracted from its casing simply using a screwdriver. This operation also allows orienting the earthing contact in the desired direction.

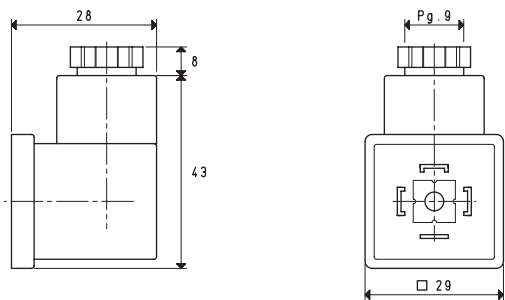


### COIL CONNECTORS

Art.	Contact nominal capacity		Conductor max. section	Operating temperature	Ø cable	Weight	Notes	Coil art.
	A		mm <sup>2</sup>	°C	mm	g		
00 07 174	10	max 16	1.5	-40 ÷ +90	6 ÷ 8	24	Standard	00 07 172
00 07 260	10	max 16	1.5	-40 ÷ +90	6 ÷ 8	24	with LED	00 07 173

Conversion ratio: inch =  $\frac{\text{mm}}{25.4}$ , pounds =  $\frac{\text{g}}{453.6}$  =  $\frac{\text{Kg}}{0.4536}$

SOLENOID VALVE ACCESSORIES AND SPARE PARTS

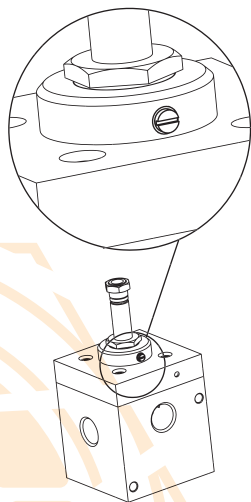


COIL CONNECTORS

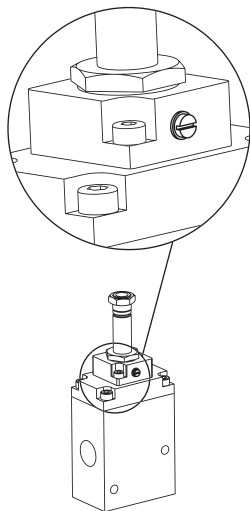
Art.	Contact nominal capacity		Conductor max. section	Operating temperature	Ø cable	Weight	Notes
	A		mm²	°C	mm	g	
00 07 63	10	max 16	1.5	-40 ÷ +90	6 ÷ 8	24	Standard
00 07 101	10	max 16	1.5	-40 ÷ +90	6 ÷ 8	24	with LED
00 07 186	10	max 16	1.5	-40 ÷ +90	6 ÷ 8	24	with LED and filtre
Coil art.							
00 07 03 - 00 07 04 - 00 07 05 - 00 07 06 - 00 07 215 - 00 07 216 - 00 07 217 - 00 07 218 - 00 07 219							
00 07 256 - 00 07 257 - 00 07 258 - 00 07 259							

SM DEVICE FOR MANUALLY OPENING AND CLOSING THE SOLENOID VALVES

*This small cam, which can be activated by a screwdriver, acts on the mobile core of the actuators causing their commutation.*  
*This device is installed, upon request, on compressed-air pilot-operated 3-way solenoid valves art. 07 .. 11 or vacuum solenoid valves art. 07 .. 40, to allow their opening and closing in absence of electricity.*  
*To order it, all you have to do is add the letters SM to the article of the solenoid valve.*



SM device installation on solenoid valve art. 07 .. 40



SM device installation on solenoid valve art. 07 .. 11