

TANKS FOR VERTICAL PUMPSETS WITH ONE VACUUM PUMP

Vertical pumpset tanks have a circular section and are made with welded sheet steel with perfect vacuum seal, while the pump support frame, which is welded to the tank, is made with profiled steel.

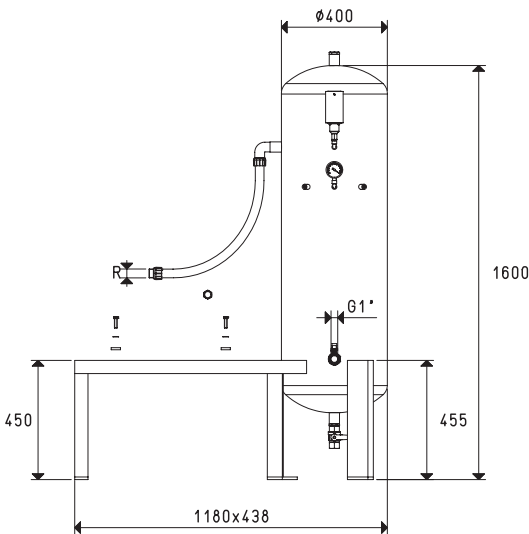
Both the tank and the support frame are varnished with special corrosion and water condensation-resistant paint.

They are set for the installation of a vacuum pump and a switchgear to be selected among those in the table, and are equipped with:

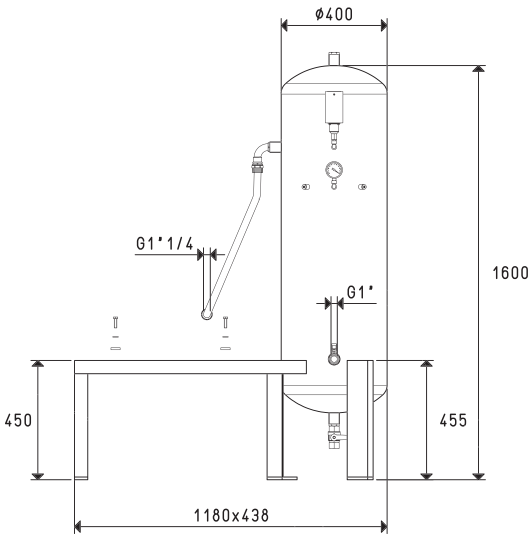
- A vacuum switch for adjusting the vacuum level within which to operate.
- A vacuum gauge for a direct reading of the vacuum level in the tank.
- A check valve for the pumps that do not have them.
- A manual valve for vacuum interception.
- A cock for condensation drainage.

- Hoses and fittings for connecting the pump to the tank and screws for fixing it to the support frame.

Available with various volumes, from 150 to 1000 litres.

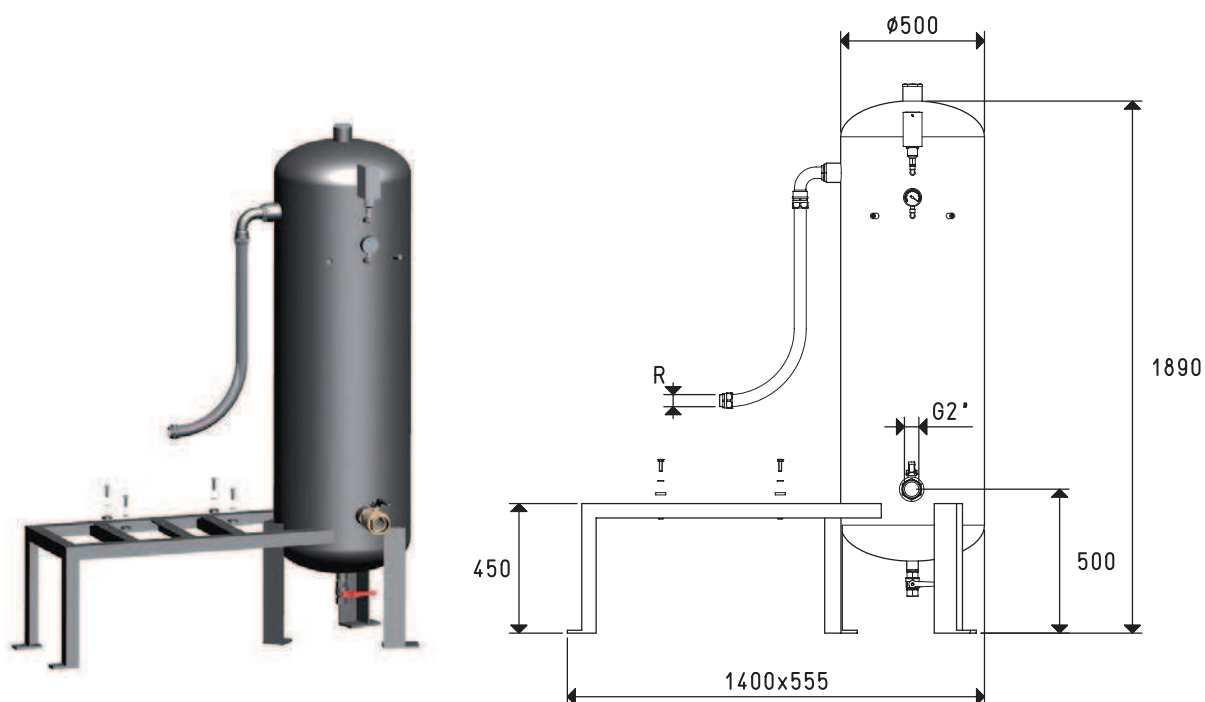


Art.	Tank	Weight	R	Pump	For:	Switchgear	Recommended filtre accessories
	Litres	Kg	Ø	Mod.		art.	art.
DV 150 01	150	63	G3/4"	VTL 25/FG - VTL 30/FG - VTL 35/FG		D0 100 90	FB 30 / FC 30
DV 150 02	150	63	G1"	VTL 50/G1 - VTL 75/G1		D0 100 90	FB 30 / FC 30

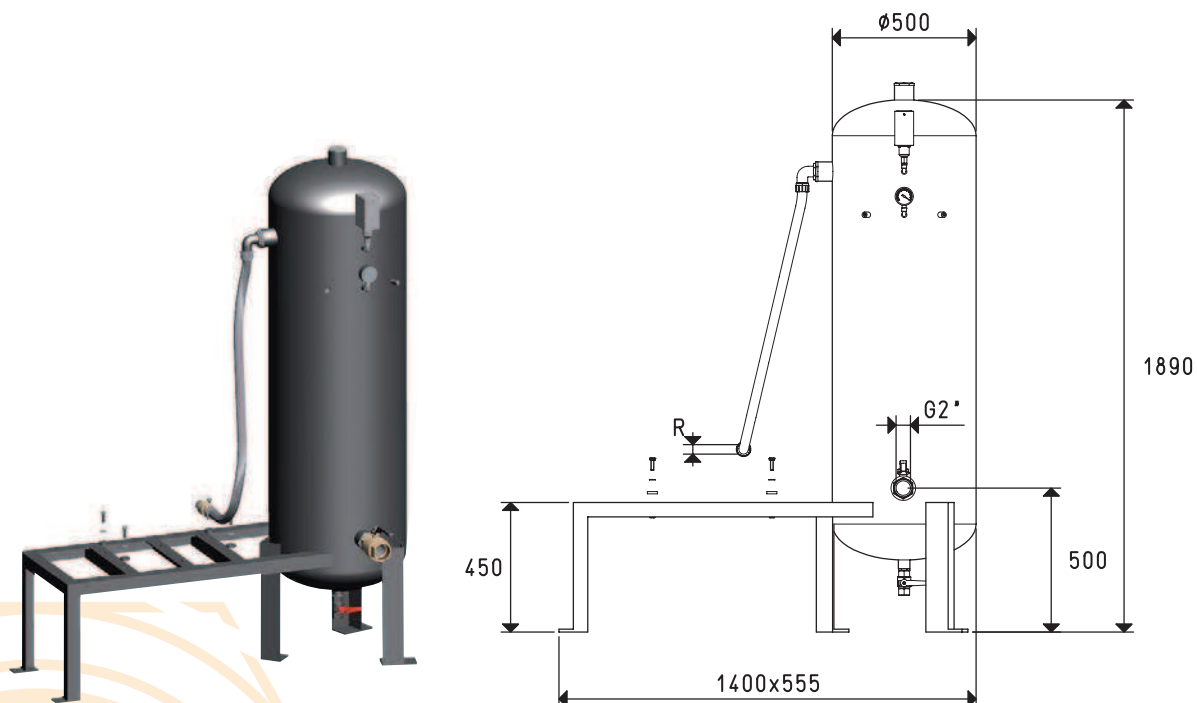


Art.	Tank	Weight	2 pumps	For:	Switchgear	Recommended filtre accessories
	Litres	Kg	Mod.		art.	art.
DV 150 03	150	63	MV 40 - MV 60		D0 100 90	FB 30 / FC 30

TANKS FOR VERTICAL PUMPSETS WITH ONE PUMP

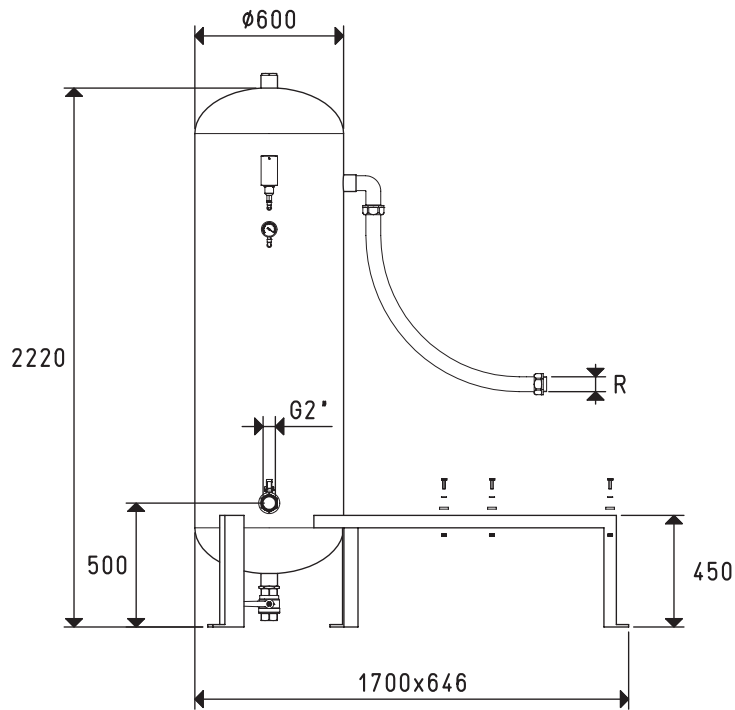


Art.	Tank		R	For:		Recommended filtre accessories art.
	Litres	Weight Kg		Pump Mod.	Switchgear art.	
DV 300 01	300	75	G1"1/4	MV 40 - MV 60 - MV 100	D0 100 90	FB 60 / FC 60
DV 300 04	300	75	G1"1/2	MV 160R	D0 100 90	FB 60 / FC 60

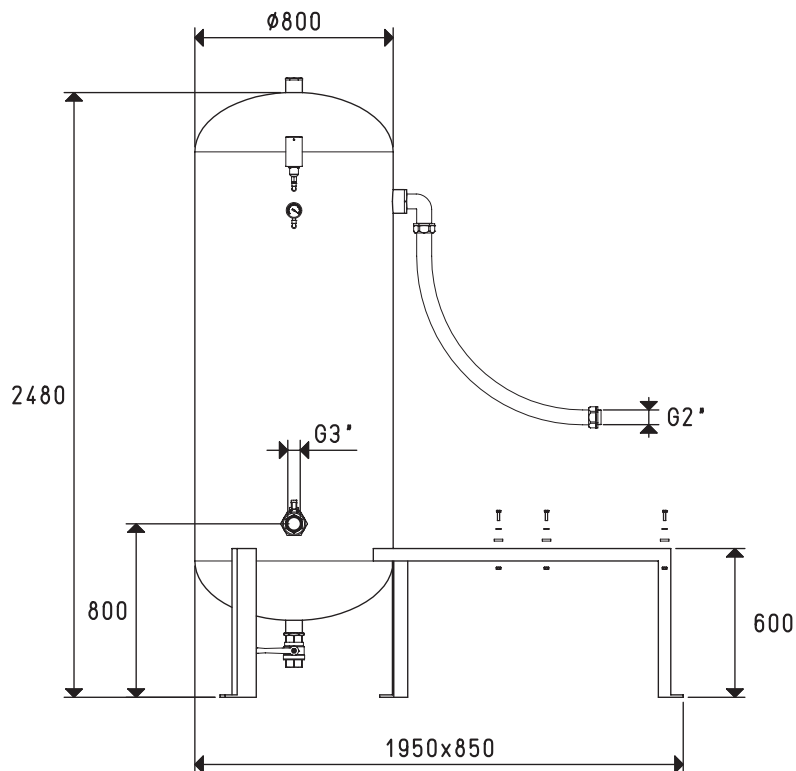


Art.	Tank		R	For:		Recommended filtre accessories art.
	Litres	Weight Kg		Pump Mod.	Switchgear art.	
DV 300 02	300	75	G1"	VTL 50/G1	D0 100 90	FB 60 / FC 60
DV 300 03	300	75	G1"1/4	VTL 75/G1 - VTL 105/G1	D0 100 90	FB 60 / FC 60

TANKS FOR VERTICAL PUMPSETS WITH ONE PUMP



Art.	Tank		R	For:		Recommended filtre accessories art.
	Litres	Weight Kg		Pump Mod.	Switchgear art.	
DV 500 02	500	165	G1"1/2	MV 160R	D0 100 90	FB 60 / FC 60
DV 500 03	500	165	G2"	MV 200R - MV 300R	D0 100 91	FB 60 / FC 60



Art.	Tank		Weight Kg	Pump Mod.	For:		Recommended filtre accessories art.
	Litres				Switchgear art.		
DV 1000 03	1000	214		MV 200R - MV 300R	D0 100 91		FC 80

Conversion ratio: inch = $\frac{\text{mm}}{25.4}$; pounds = $\frac{\text{g}}{453.6} = \frac{\text{Kg}}{0.4536}$

GAS-NPT thread adapters available at page 1.117

TANKS FOR VERTICAL PUMPSETS WITH TWO VACUUM PUMPS

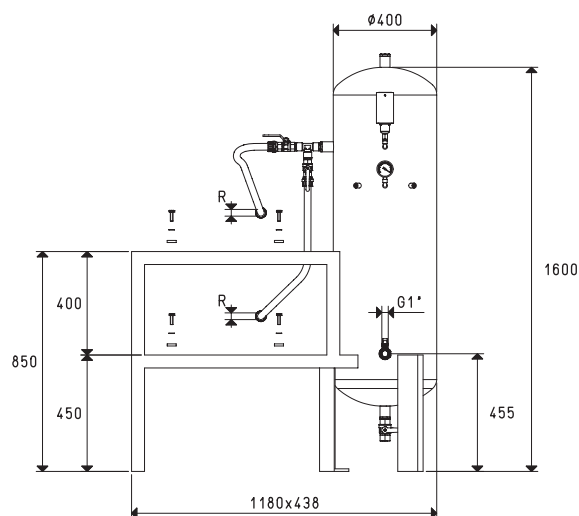
Vertical pumpset tanks have a circular section and are made with welded sheet steel with perfect vacuum seal, while the pump support frame, which is welded to the tank with volume up to 500 litres and is autonomous over that capacity, is made with profiled steel.

Both the tank and the support frame are varnished with special corrosion and water condensation-resistant paint.

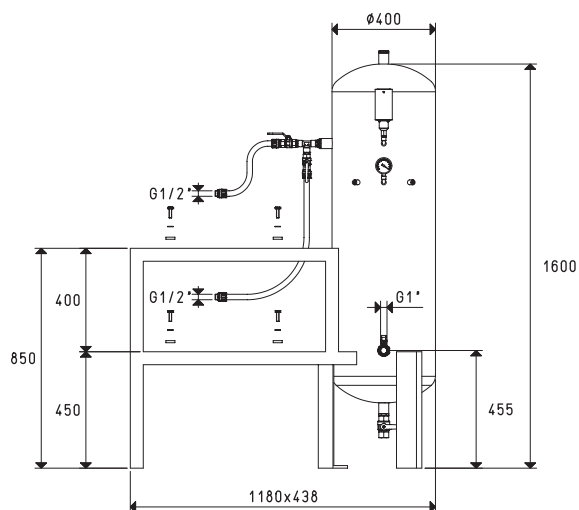
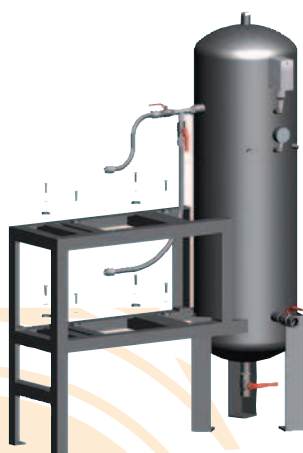
They are set for the installation of two vacuum pumps and a switchgear, to be selected among those in the table, and are equipped with:

- A vacuum switch for adjusting the vacuum level within which to operate.
- A vacuum gauge for a direct reading of the vacuum level in the tank.
- Two check valves for the pumps that do not have them.
- Two manual valves for pump exclusion.
- A manual valve for vacuum interception.
- A cock for condensation drainage.
- Hoses and fittings for connecting the pumps to the tank and screws for fixing them to the support frame.

Available with various volumes, from 150 to 2000 litres.

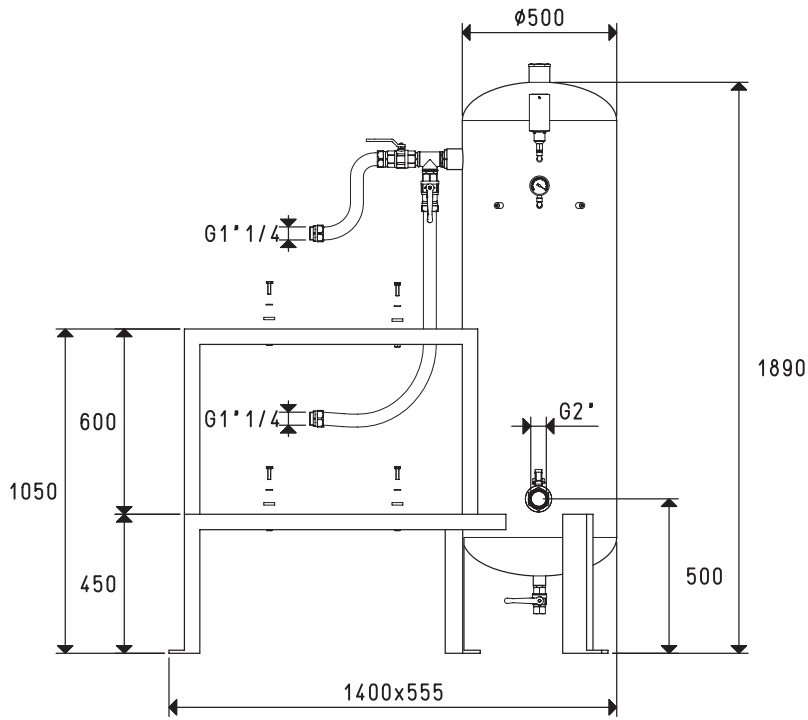


Art.	Tank		R	For:		Recommended filtre accessories art.
	Litres	Kg		2 pumps	Switchgear	
D2V 150 01	150	70	G1/2"	VTL 10/F - VTL 15/F - VTL 20/F	D2V 150 90	FB 30 / FC 30
D2V 150 03	150	70	G3/4"	VTL 25/FG - VTL 30/FG - VTL 35/FG	D2V 150 90	FB 30 / FC 30

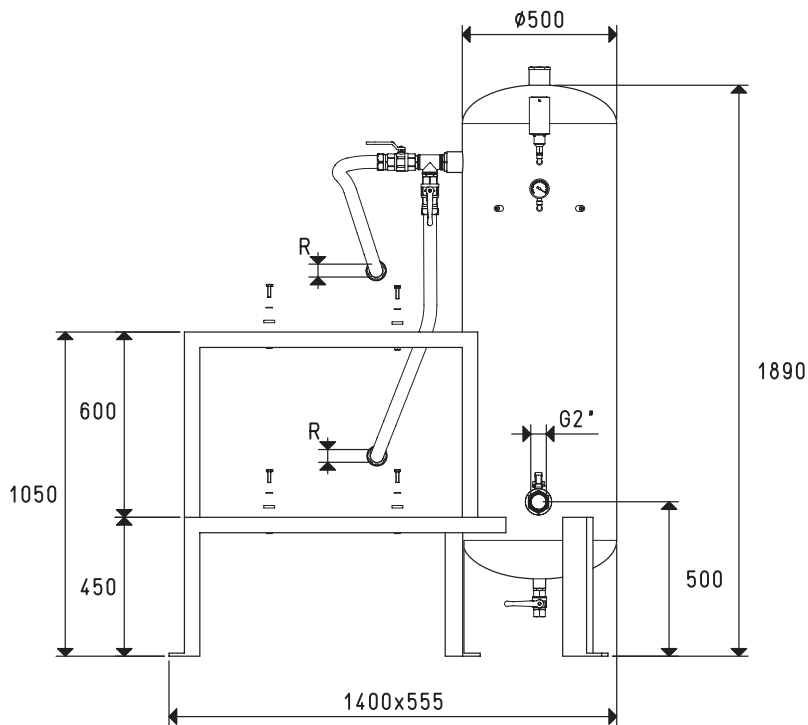


Art.	Tank		Weight	For:		Recommended filtre accessories art.
	Litres	Kg		2 pumps	Switchgear	
D2V 150 02	150	70		MV 20	D2V 150 90	FB 30 / FC 30

TANKS FOR VERTICAL PUMPSETS WITH TWO PUMPS



Art.	Tank		2 pumps		For:	Switchgear	Recommended filtre accessories
	Litres	Weight Kg	Mod.			art.	art.
D2V 300 01	300	98	MV 40 - MV 60 - MV 100			D2V 150 90	FB 60 / FC 60

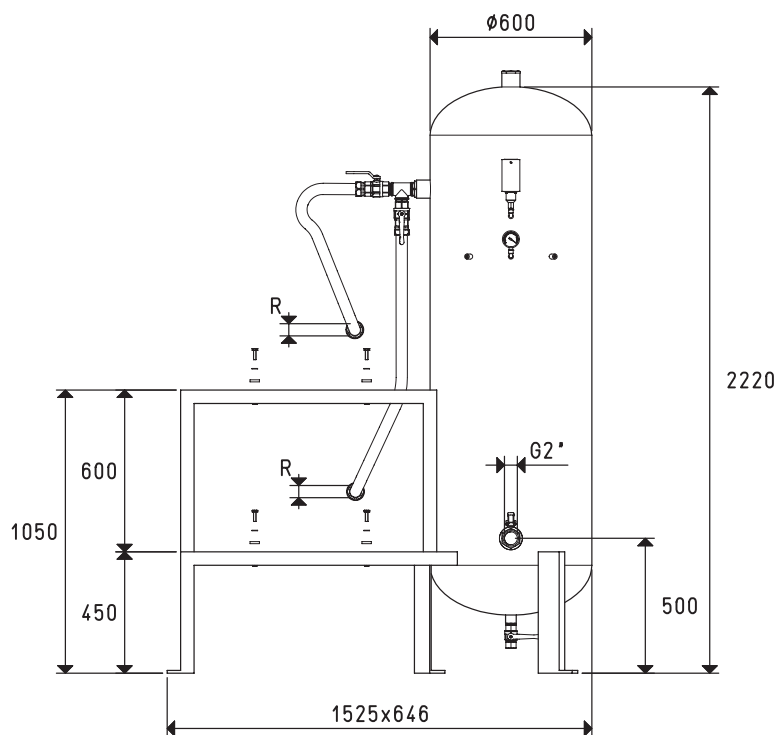


Art.	Tank		R	2 pumps		For:	Switchgear	Recommended filtre accessories
	Litres	Weight Kg		Mod.			art.	art.
D2V 300 02	300	98	G1"	VTL 50/G1			D2V 150 90	FB 60 / FC 60
D2V 300 03	300	98	G1"1/4	VTL 75/G1 - VTL 105/ G1			D2V 150 90	FB 60 / FC 60

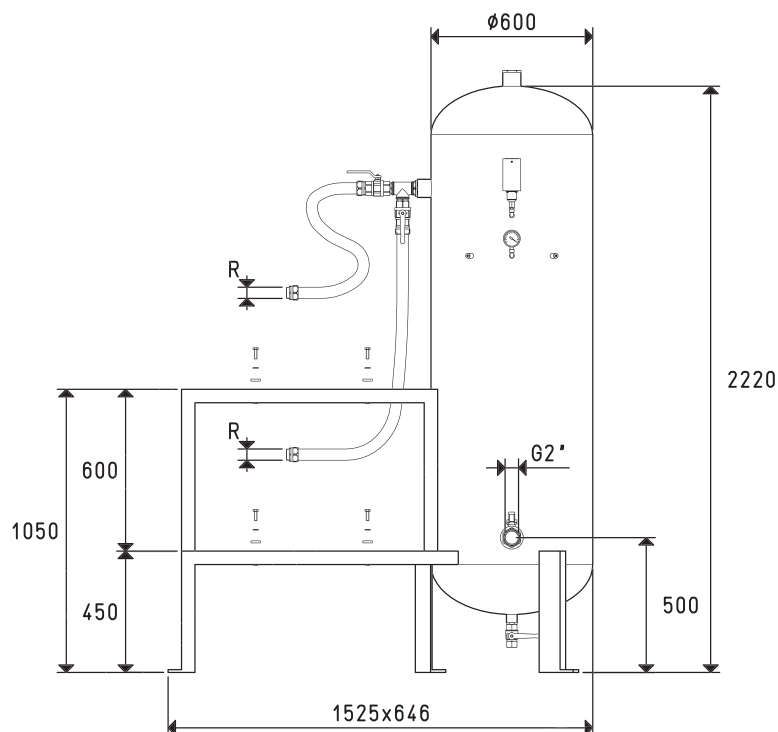
Conversion ratio: inch = $\frac{\text{mm}}{25.4}$; pounds = $\frac{\text{g}}{453.6} = \frac{\text{Kg}}{0.4536}$

GAS-NPT thread adapters available at page 1.117

TANKS FOR VERTICAL PUMPSETS WITH TWO PUMPS

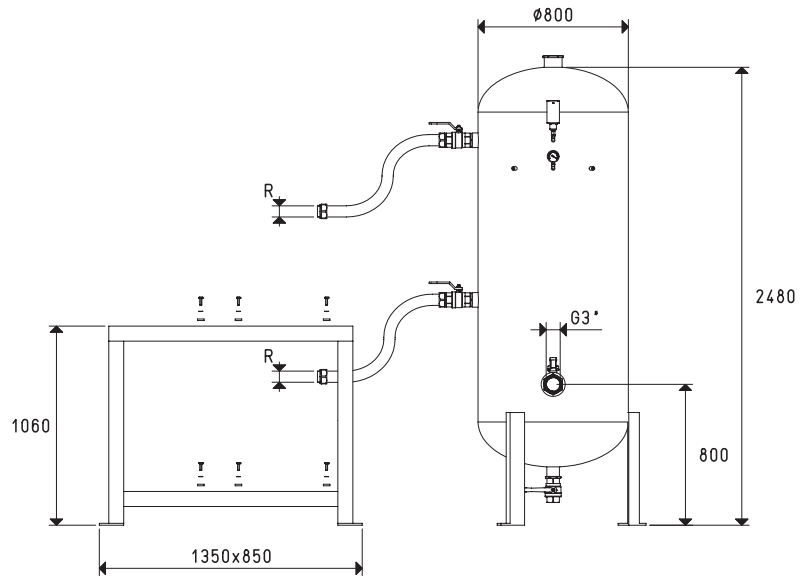


Art.	Tank		R	For:		Recommended filtre accessories art.
	Litres	Weight Kg		2 pumps	Switchgear	
			Ø	Mod.	art.	
D2V 500 01	500	173	G1"1/4	VTL 75/G1	D2V 150 90	FB 60 / FC 60
D2V 500 03	500	173	G1"1/2	VTL 105/G1	D2V 150 90	FB 60 / FC 60

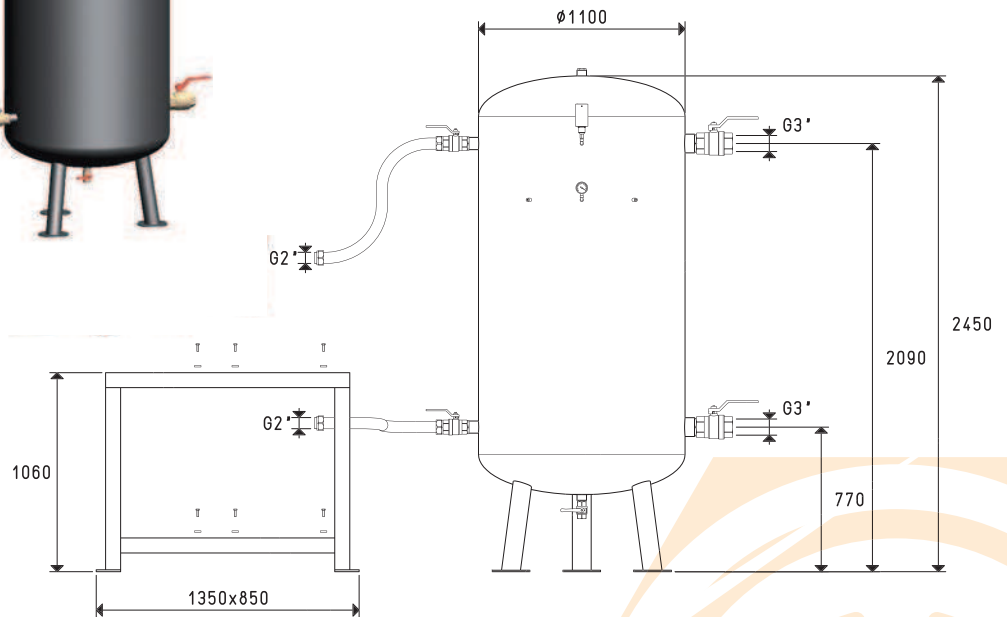


Art.	Tank		R	For:		Recommended filtre accessories art.
	Litres	Weight Kg		2 pumps	Switchgear	
			Ø	Mod.	art.	
D2V 500 02	500	173	G1"1/4	MV 60 - MV 100	D2V 150 90	FB 60 / FC 60
D2V 500 04	500	173	G1"1/2	MV 160R	D2V 150 90	FB 60 / FC 60

TANKS FOR VERTICAL PUMPSETS WITH TWO PUMPS



Art.	Tank		R	For:		Recommended filtre accessories art.
	Litres	Kg		2 pumps	Switchgear	
D2V 1000 01	1000	243	G1"1/2	MV 160R	DV 150 90	FC 80
D2V 1000 02	1000	243	G2"	MV 200R - MV 300R	DV 150 91	FC 80



Art.	Tank		Weight	For:		Recommended filtre accessories art.
	Litres	Kg		2 pumps	Switchgear	
D2V 2000 01	2000	580		MV 200R - MV 300R	DV 150 91	FC 80

Conversion ratio: inch = $\frac{\text{mm}}{25.4}$; pounds = $\frac{\text{g}}{453.6} = \frac{\text{Kg}}{0.4536}$

GAS-NPT thread adapters available at page 1.117

7.107

TANKS FOR VERTICAL SAFETY PUMPSETS WITH TWO VACUUM PUMPS

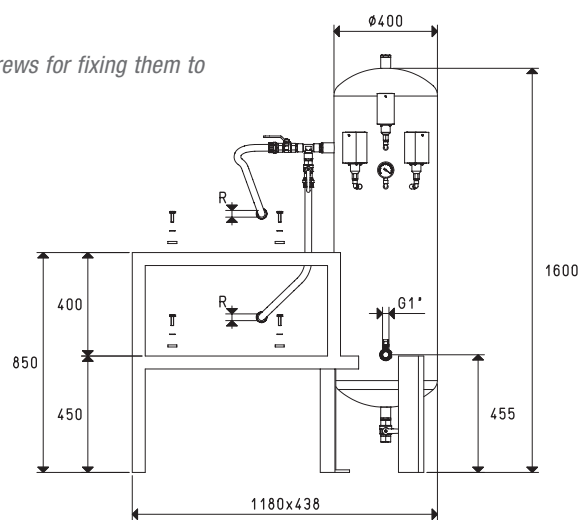
Vertical safety pumpset tanks have a circular section and are made with welded sheet steel with perfect vacuum seal, while the pump support frame, which is welded to the tanks with a volume up to 500 litres and is autonomous above that volume, is made with profiled steel.

Both the tank and the support frame are varnished with special corrosion and water condensation-resistant paint.

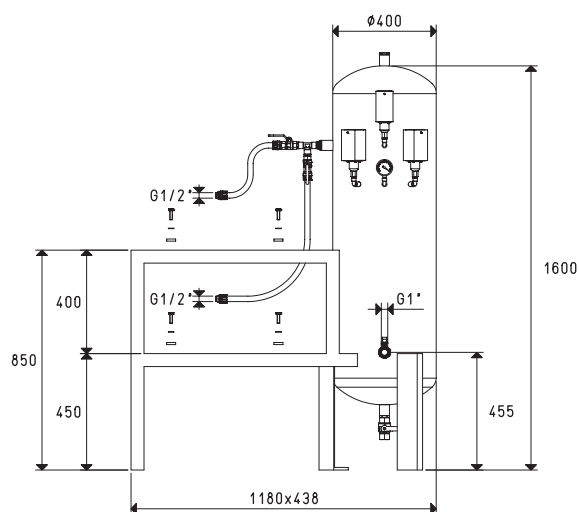
They are set for the installation of two vacuum pumps and a switchgear, to be selected among those in the table, and are equipped with:

- Three vacuum switches, of which two are for adjusting the vacuum level within which each pump must operate in order to determine the minimum safety value, under which the alarm sets off.
- A vacuum gauge for a direct reading of the vacuum level in the tank.
- Two check valves for the pumps that do not have them.
- Two manual valves for pump exclusion.
- A manual valve for vacuum interception.
- A cock for condensation drainage.
- Hoses and fittings for connecting the pumps to the tank and screws for fixing them to the support frame.

Available with various volumes, from 150 to 2000 litres.

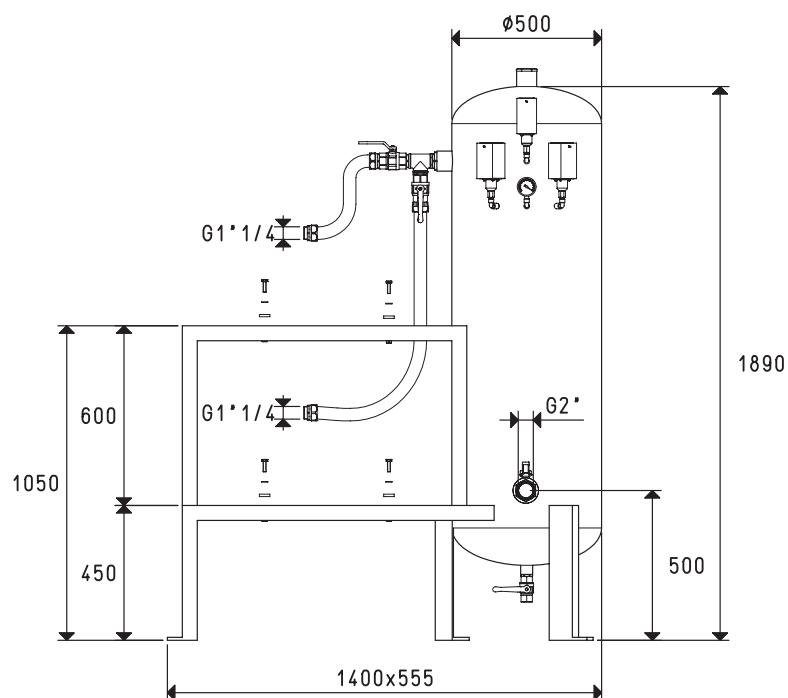


Art.	Tank		R	For:		Recommended filtre accessories art.
	Litres	Kg		2 pumps	Switchgear	
				Mod.	art.	
DSV 150 01	150	72	G1/2"	VTL 10/F - VTL 15/F - VTL 20/F	DS0 300 90	FB 30 / FC 30
DSV 150 03	150	72	G3/4"	VTL 25/FG - VTL 30/FG - VTL 35/FG	DS0 300 90	FB 30 / FC 30

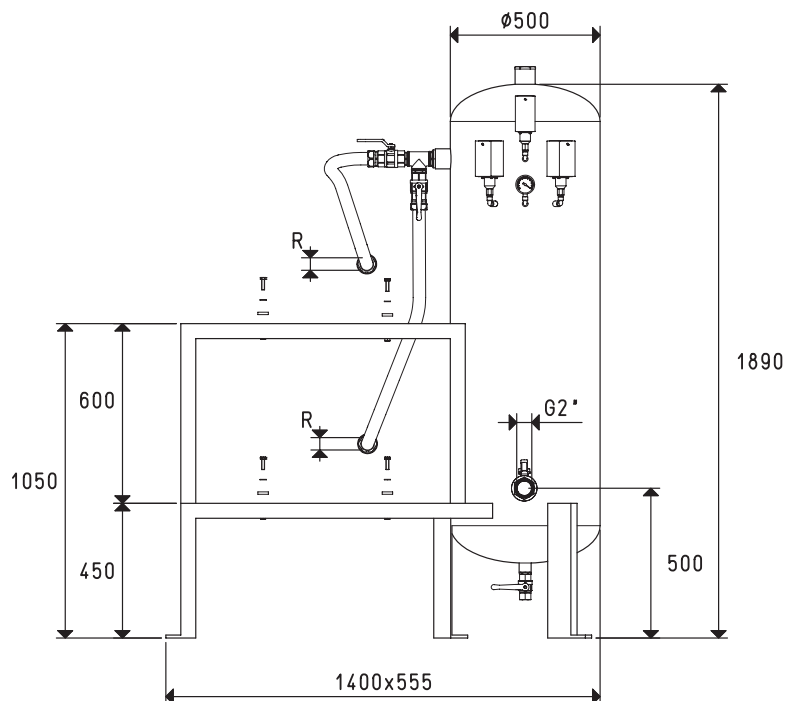


Art.	Tank		Weight	For:		Recommended filtre accessories art.
	Litres	Kg		2 pumps	Switchgear	
				Mod.	art.	
DSV 150 02	150	72		MV 20	DS0 300 90	FB 30 / FC 30

TANKS FOR VERTICAL SAFETY PUMPSETS WITH TWO PUMPS



Art.	Tank	Weight	For:			Recommended filtre accessories art.
			2 pumps	Switchgear		
	Litres	Kg	Mod.	art.		
DSV 300 01	300	100	MV 40 - MV 60 - MV 100	DSO 300 90		FB 60 / FC 60

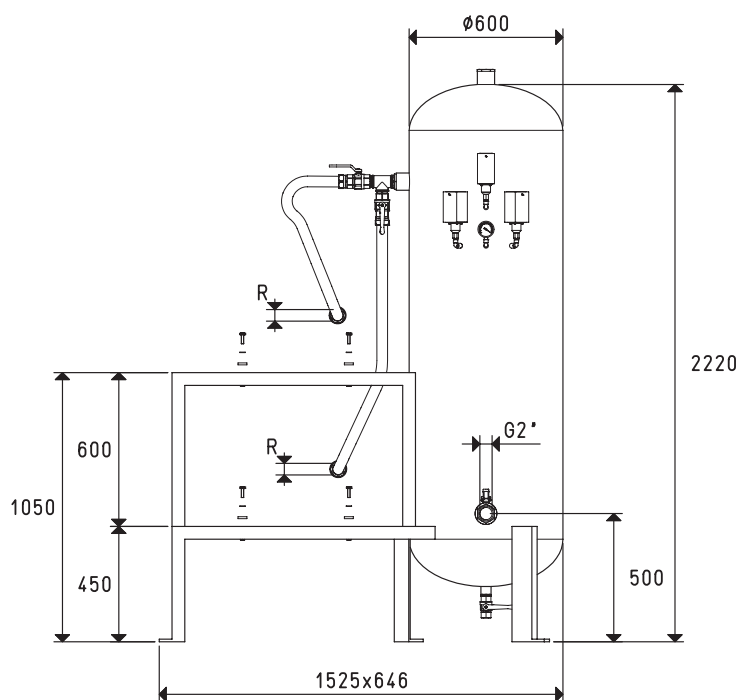


Art.	Tank	Weight	R	For:			Recommended filtre accessories art.
				2 pumps	Switchgear		
	Litres	Kg	Ø	Mod.	art.		
DSV 300 02	300	100	G1"	VTL 50/G1	DSO 300 90		FB 60 / FC 60
DSV 300 03	300	100	G1 1/4"	VTL 75/G1 - VTL 105/G1	DSO 300 90		FB 60 / FC 60

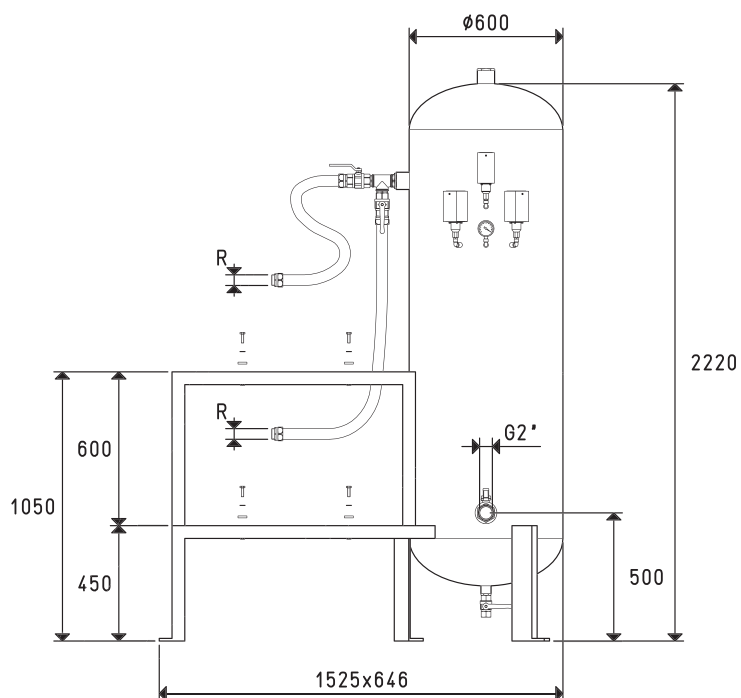
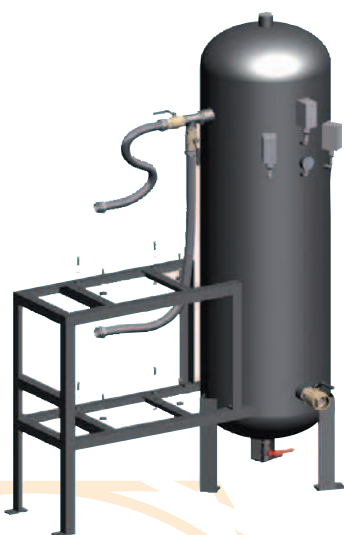
Conversion ratio: inch = $\frac{\text{mm}}{25.4}$; pounds = $\frac{\text{g}}{453.6} = \frac{\text{Kg}}{0.4536}$

GAS-NPT thread adapters available at page 1.117

TANKS FOR VERTICAL SAFETY PUMPSETS WITH TWO PUMPS

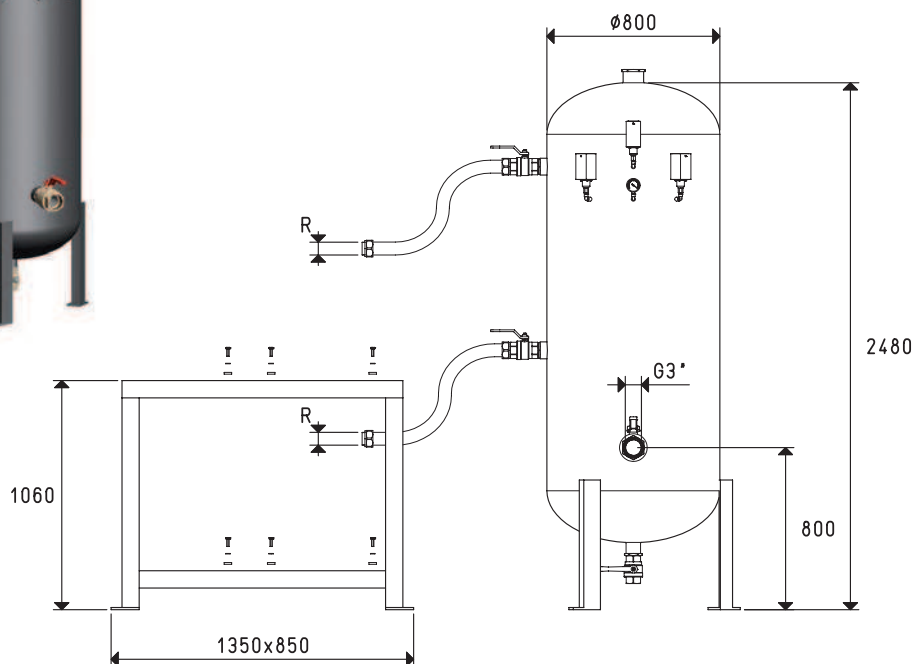
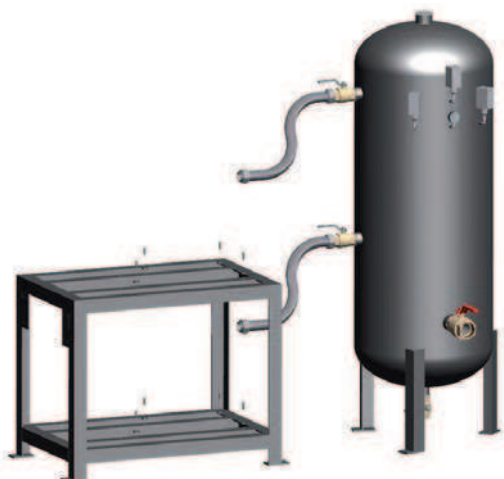


Art.	Tank		R	For:		Recommended filtre accessories art.
	Litres	Weight Kg		2 pumps	Switchgear	
			Ø	Mod.	art.	
DSV 500 01	500	175	G1"1/4	VTL 75/G1	DSO 300 90	FB 60 / FC 60
DSV 500 03	500	175	G1"1/2	VTL 105/G1	DSO 300 90	FB 60 / FC 60

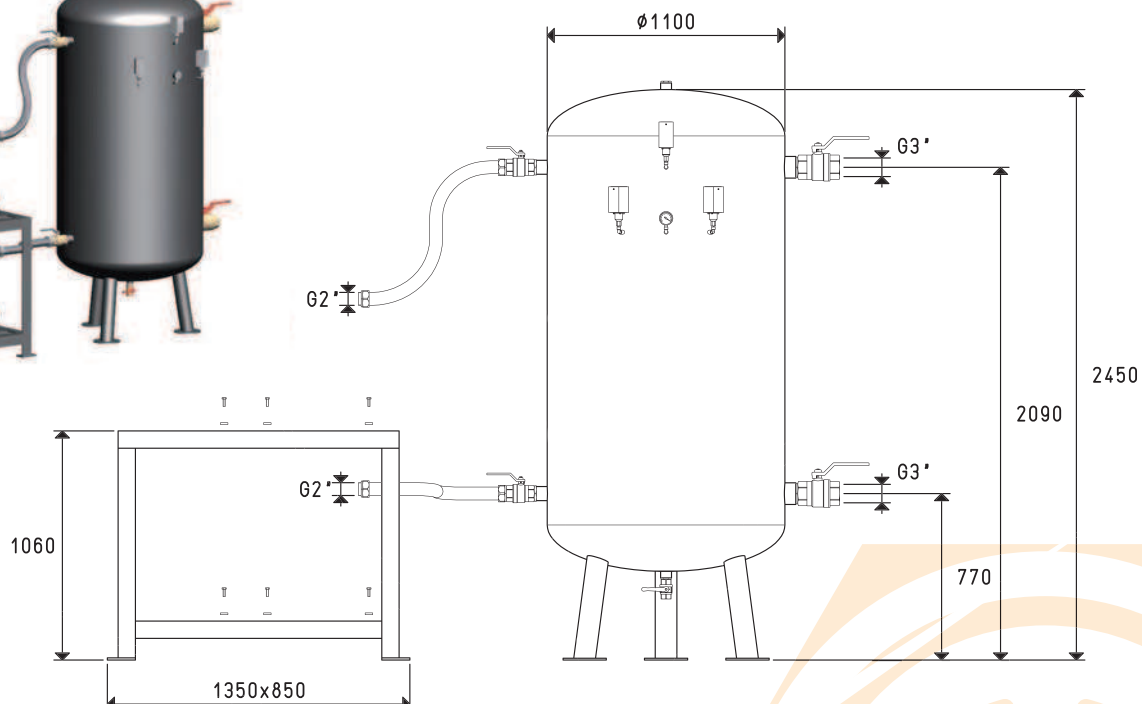


Art.	Tank		R	For:		Recommended filtre accessories art.
	Litres	Weight Kg		2 pumps	Switchgear	
			Ø	Mod.	art.	
DSV 500 02	500	175	G1"1/4	MV 60 - MV 100	DSO 300 90	FB 60 / FC 60
DSV 500 04	500	175	G1"1/2	MV 160R	DSO 300 90	FB 60 / FC 60

TANKS FOR VERTICAL SAFETY PUMPSETS WITH TWO PUMPS



Art.	Tank	Weight	R	2 pumps	For:	Switchgear	Recommended filtre accessories
	Litres	Kg	Ø	Mod.		art.	art.
DSV 1000 01	1000	245	G1"1/2	MV 160R		DSO 300 90	FC 80
DSV 1000 02	1000	245	G2"	MV 200R - MV 300R		DSO 300 91	FC 80



Art.	Tank	Weight	2 pumps	For:	Switchgear	Recommended filtre accessories
	Litres	Kg	Mod.		art.	art.
DSV 2000 01	2000	582	MV 200R - MV 300R		DSO 300 91	FC 80

Conversion ratio: inch = $\frac{\text{mm}}{25.4}$; pounds = $\frac{\text{g}}{453.6} = \frac{\text{Kg}}{0.4536}$

GAS-NPT thread adapters available at page 1.117

7.111

TANKS FOR VERTICAL SAFETY PUMPSETS WITH THREE VACUUM PUMPS

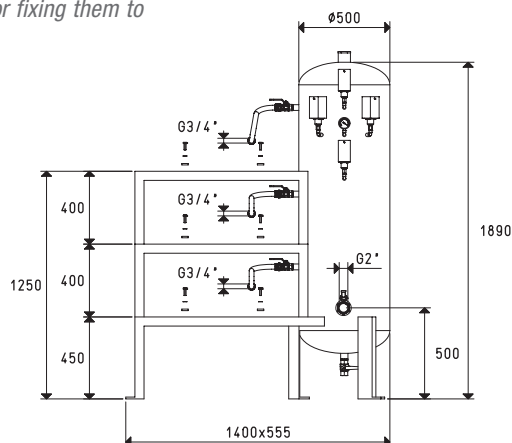
Vertical safety pumpset tanks have a circular section and are made with welded sheet steel with perfect vacuum seal, while the pump support frame, which is welded to the tanks with a volume up to 500 litres and is autonomous above that volume, is made with profiled steel.

Both the tank and the support frame are varnished with special corrosion and water condensation-resistant paint.

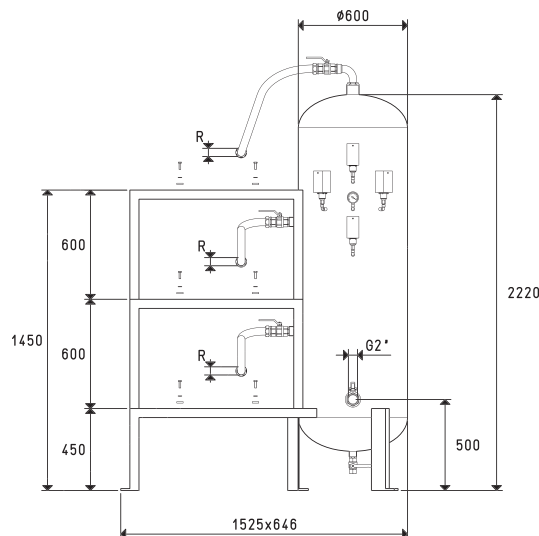
They are set for the installation of three vacuum pumps and a switchgear to be selected among those in the table, and are equipped with:

- Four vacuum switches, of which three are for adjusting the vacuum level within which each pump must operate and one is for determining the minimum safety value, under which the alarm sets off.
- A vacuum gauge for a direct reading of the vacuum level in the tank.
- Three check valves for the pumps that do not have them
- Three manual valves for pump exclusion.
- A manual valve for vacuum interception.
- A cock for condensation drainage.
- Hoses and fittings for connecting the pumps to the tank and screws for fixing them to the support frame.

Available with various volumes, from 300 to 2000 litres.

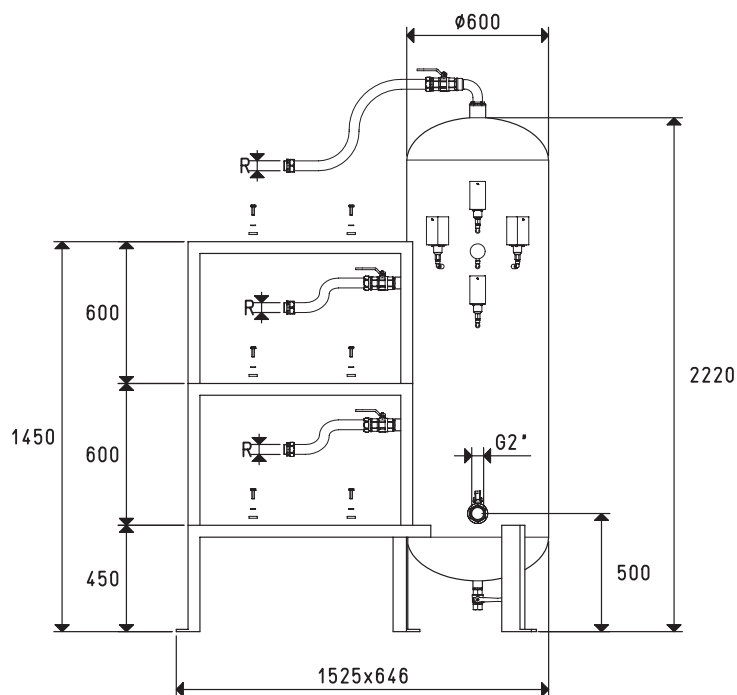


Art.	Tank	Weight	For:		Recommended filtre accessories art.
			3 pumps	Switchgear	
	Litres	Kg	Mod.	art.	
DS3V 300 01	300	112	VTL 25/FG - VTL 30/FG - VTL 35/FG	DSO 300 95	FB 60 / FC 60

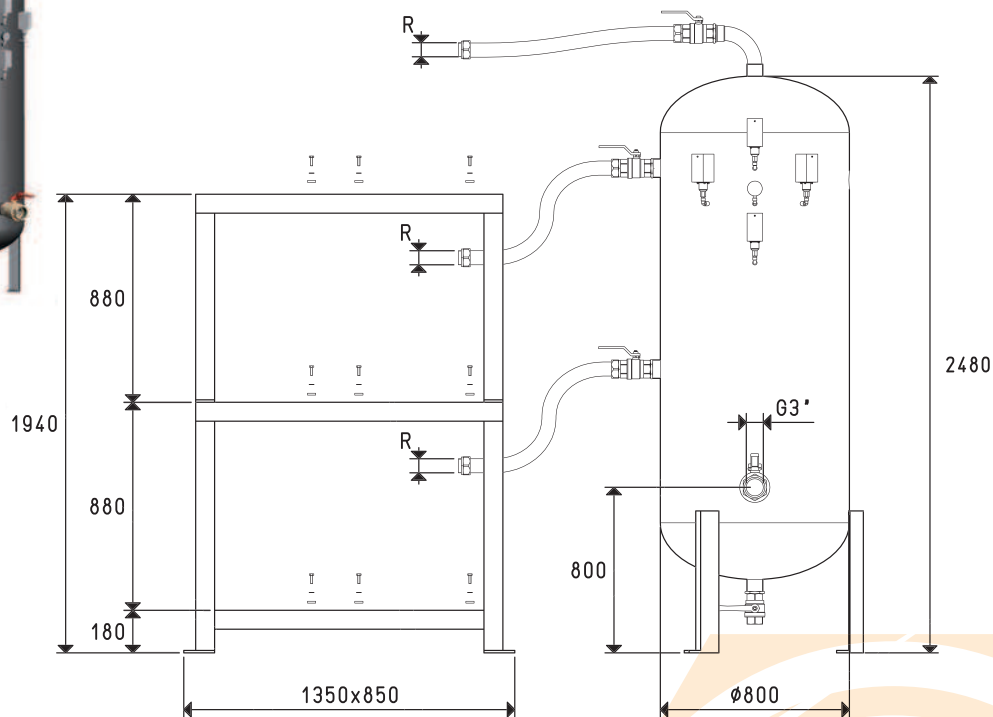


Art.	Tank	Weight	R	For:		Recommended filtre accessories art.
				3 pumps	Switchgear	
	Litres	Kg	Ø	Mod.	art.	
DS3V 500 01	500	192	G1"	VTL 50/G1	DSO 300 95	FB 60 / FC 60
DS3V 500 02	500	192	G1 1/4"	VTL 75/G1	DSO 300 95	FB 60 / FC 60

TANKS FOR VERTICAL SAFETY PUMPSETS WITH THREE PUMPS



Art.	Tank		R	For:		Recommended filtre accessories art.
	Litres	Kg		3 pumps	Switchgear	
DS3V 500 03	500	192	G1"1/4	MV 40 - MV 60 - MV 100	DS0 300 95	FB 60 / FC 60

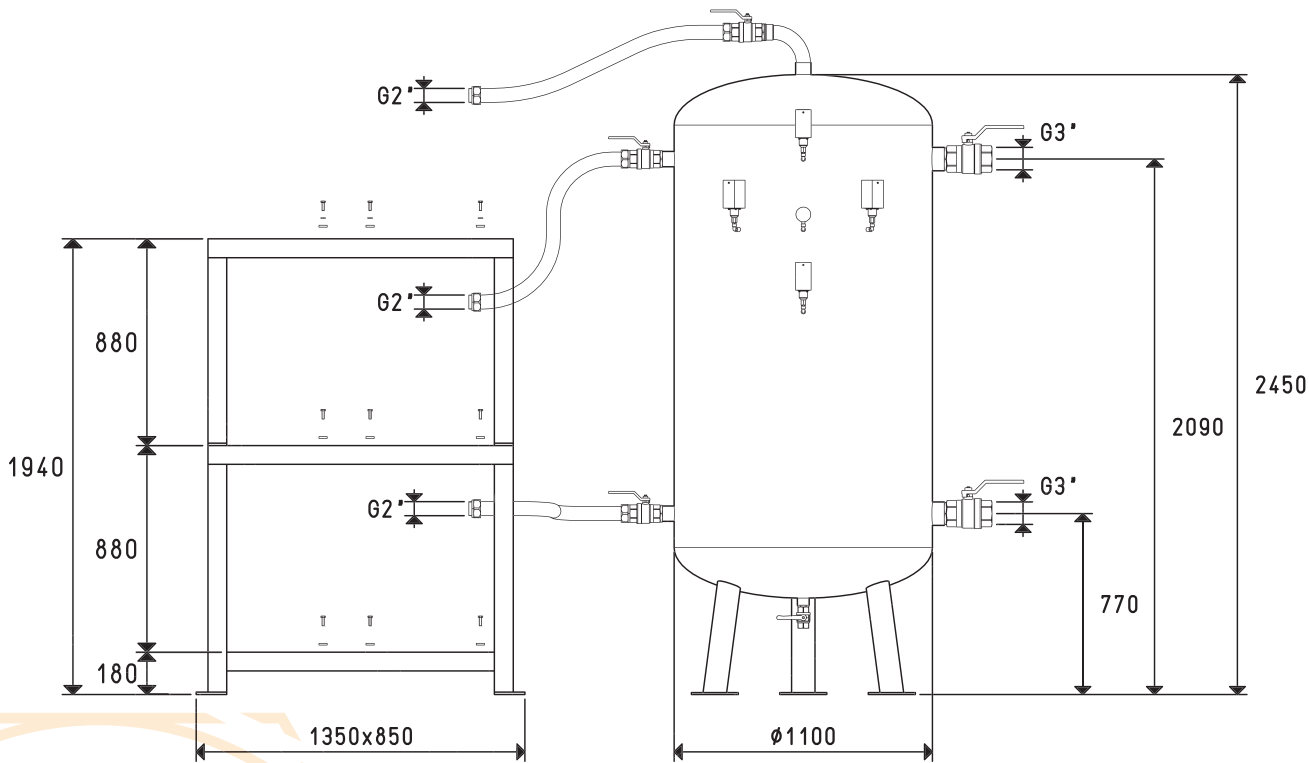


Art.	Tank		R	For:		Recommended filtre accessories art.
	Litres	Kg		3 pumps	Switchgear	
DS3V 1000 01	1000	280	G1"1/2	MV 160R	DS0 300 95	FC 80
DS3V 1000 02	1000	280	G2"	MV 200R - MV 300R	DS0 300 96	FC 80

Conversion ratio: inch = $\frac{\text{mm}}{25.4}$; pounds = $\frac{\text{g}}{453.6} = \frac{\text{Kg}}{0.4536}$

GAS-NPT thread adapters available at page 1.117

TANKS FOR VERTICAL SAFETY PUMPSETS WITH THREE PUMPS



Art.	Tank		Weight	For:		Recommended filtre accessories art.
	Litres	Kg		3 pumps	Switchgear	
				Mod.	art.	art.
DS3V 2000 01	2000	640		MV 200R - MV 300R	DSO 300 96	FC 80