

Limit Switch Box

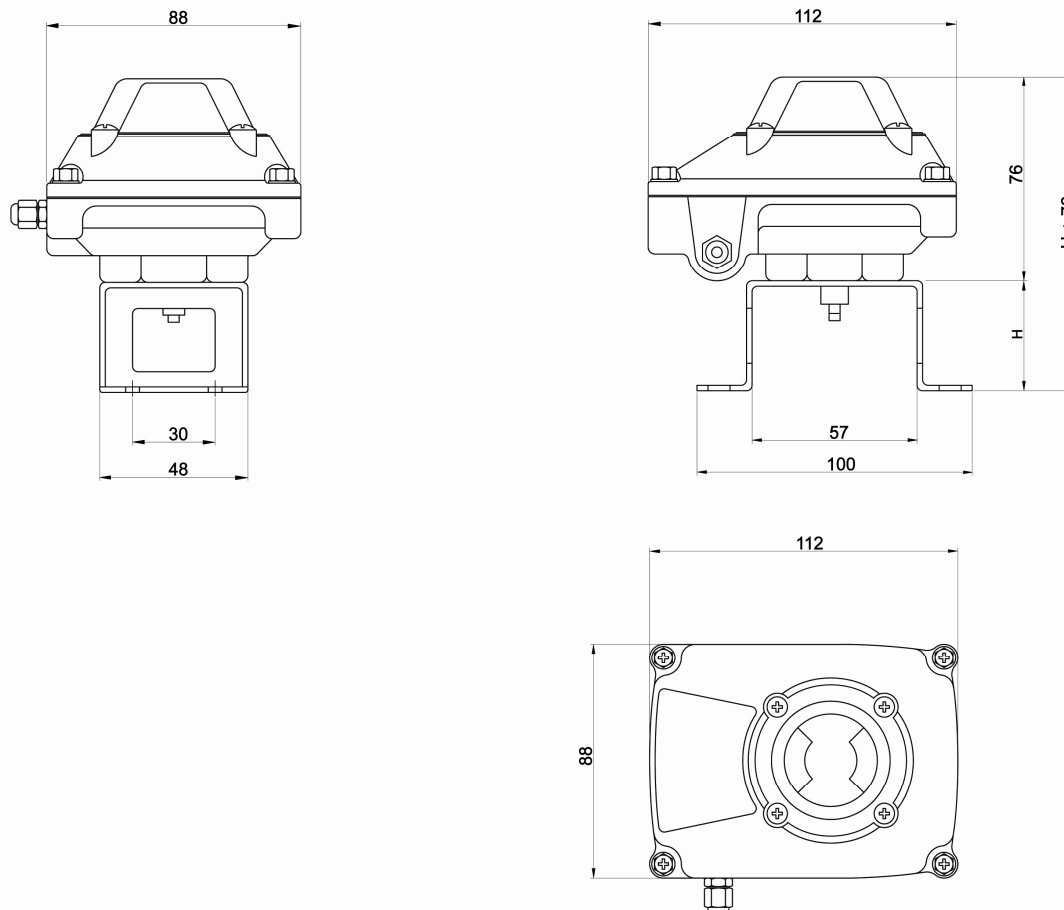


Limit Switch Box



Limit Switch Box

DIMENSIONS



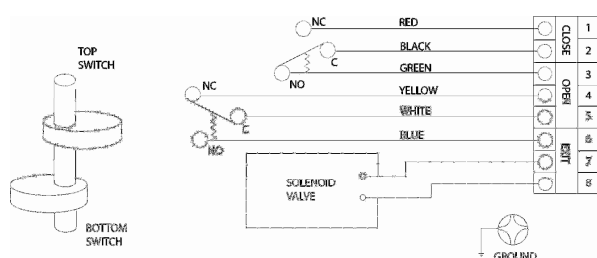
BRACKET DIMENSION

H = STD. 40

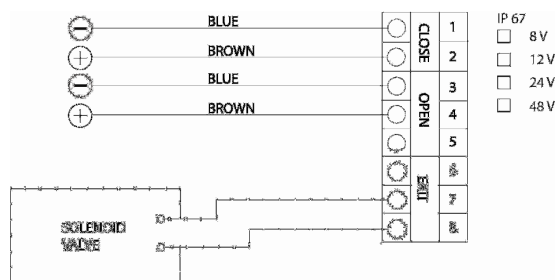
H = SPECIAL 30

LIMIT SWITCH BOX (2 SPDT)

WIRING DIAGRAM



INDUCTIVE NAMUR DETECTORS



IP 67
☐ 8 V
☐ 12 V
☐ 24 V
☐ 48 V

2 WIRE / 3 WIRE INDUCTIVE NON NAMUR AVAILABLE - OTHER OPTIONS UNDER REQUEST



Limit Switch Box

Design

This kind of limit switch box applies compact design to offer a mini-type weather proof Protection in aluminum die-cast enclosure and O-ring. The bracket is designed according to ISO 5211 and NAMUR standard.

Features

- Compact and beautiful design: Mini.type aluminum die-casting cover and housing with powder coated in black color.
- Bolts on visual position indicates: secure waterproof.
- “Quick-set” cam: With spring loaded splinted cam, no need to adjust again after initial setting and easy setting without tool.
- Multipoint terminal strip: Standard 8 points and enough strips for connection.
- Dual cable entries: 2xG 1/2 (Standard); 2-M20x1.5 or 2x1/2 NPT (Option)
- Captive cover bolts: No worry to loose bolts while cover opens.
- Easy mounting: NAMUR standard Stainless steel shaft and bracket.
- The boxes are manufactured in acc. with NAMUR (VDI/VDE 3845)
- The boxes complies with the “Low voltage Directive” (73/23CEE + 93/68/CEE) criteria as described in the European Community Directives.
- Enclosure Housing IP 67 acc. To UNE 20-324-93.
- Position Indicator of great visibility Open/Closed.
- PG 9 standard gland .
- Temperature rating determined by Electromechanic or inductive limit switches.
- Adjustable bracket for all kind or actuator ISO 5211.
- Other options under request .